



APRIL SALUMEI REDD PROJECT

PROJECT DESIGN AND VALIDATION

BRIEF

OCTOBER 2012

Meeting Agenda

- Welcome & Introduction
- Project Overview
- Chairman's Address
- Pictorial Journey
- Environmental Accounting Services – Technical
- Summary and Questions
- Thank You

April Salumei REDD Project

Project Partners



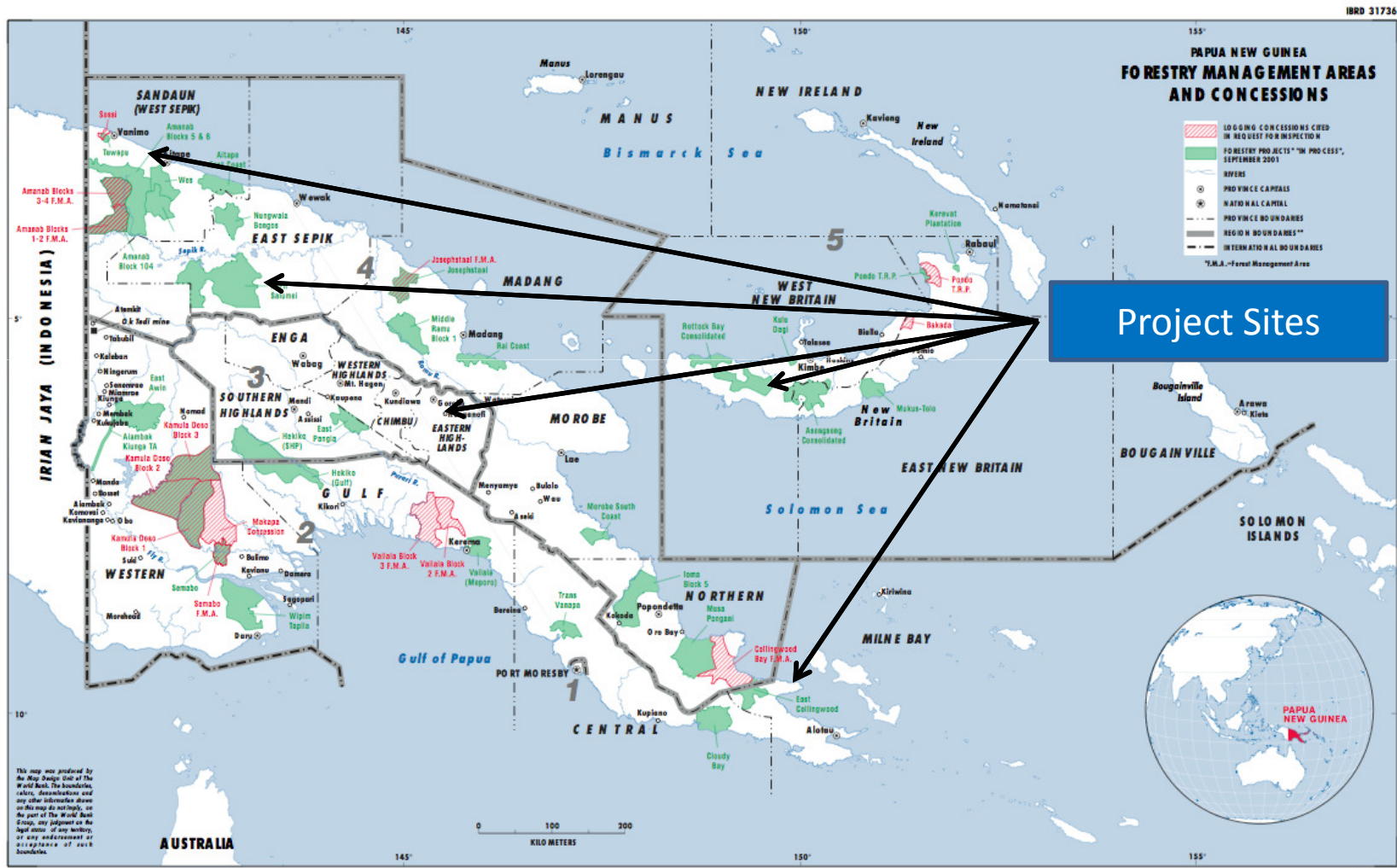
PNG
Government

Technical

Traditional
Owners

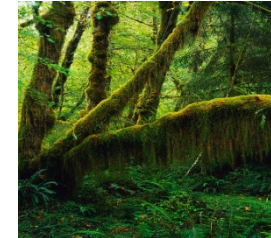
NGO

Papua New Guinea Demonstration Projects - PNGFA



April Salumei REDD Project

CCB Validation Certificate



SCIENTIFIC CERTIFICATION SYSTEMS

Statement of CCB Standards Compliance

April Salumei Sustainable Forest Management Project

Validation Scope:

The SCS Greenhouse Gas Verification Program has conducted a validation of the April Salumei Sustainable Forest Management Project against the requirements of the Climate Community Biodiversity Alliance (CCBA) Project Design Standards, Version 2.0 (December 2008). SCS conducted both desk and field based assessment activities in its evaluation of the project. SCS used the Project Design Document supplied by Rainforest Project Management Limited as the basis for its evaluation.

Validation Opinion:

Based on the results of our validation activities, it is our opinion that the project meets the quality standard defined by CCBA. The April Salumei Sustainable Forest Management Project conforms to the 14 Required CCB Criteria. The project also conforms to a total of Optional CCB Criterion qualifying the project for Gold Level.

Certificate # SCS-GHG-000019

Date: 6/13/2011

Todd Frank, SCS Lead Verifier
Scientific Certification Systems

Robert J. Hrubes, PhD, Senior Vice
Scientific Certification Systems



SCIENTIFIC CERTIFICATION SYSTEMS
Certification for a sustainable world®



2000 Powell Street, Suite 600, Emeryville, CA 94608 USA

April Salumei REDD Project



Establish core management team

- Multi-discipline team to ensure strong project, social and financial management

Establish core information systems

- Land tenure, Risk Mitigation databases
- Project and financial reporting systems

Consolidate Community and Political interfaces

- Establish Community and Political liaison committees to ensure input and feedback on progress

Continued project initiation

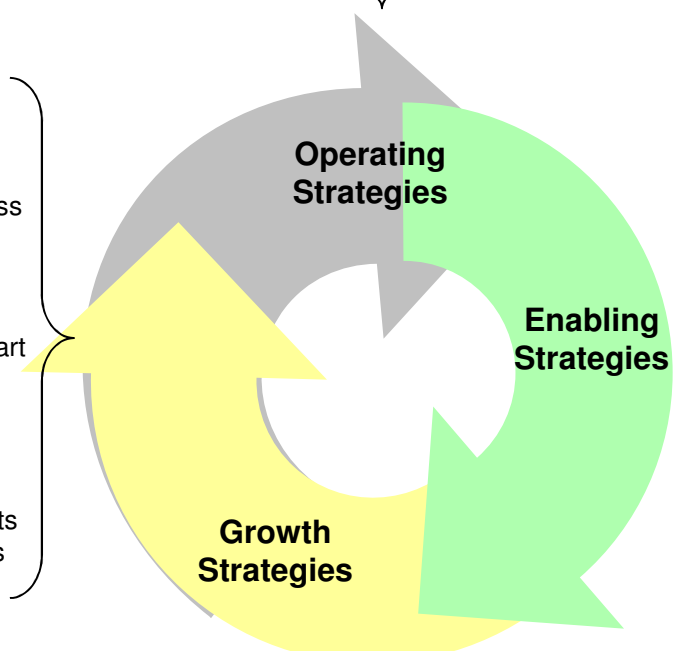
- Measurement of project effectiveness and review of opportunities

Reforestation initiatives

- Seek to establish reforestation as part of community enterprise

Carbon offset Manager to resource projects

- Assist facilitation of resource projects by providing links to carbon projects



Development of Management capacity

- Ensures steady staff profile strongly aligned to Social Outcomes

Support Local Community Structures

- Ensures strong local personal commitment and development

Invest in information systems; Social, Operational, Finance and Admin

- Ensures consistent and regular monitoring of project KPIs

Risk Management

- Regular Risk Review, Assessment and Control

Quality and Innovation

- Ensures continuous improvement and stretch targets

April Salumei REDD Project

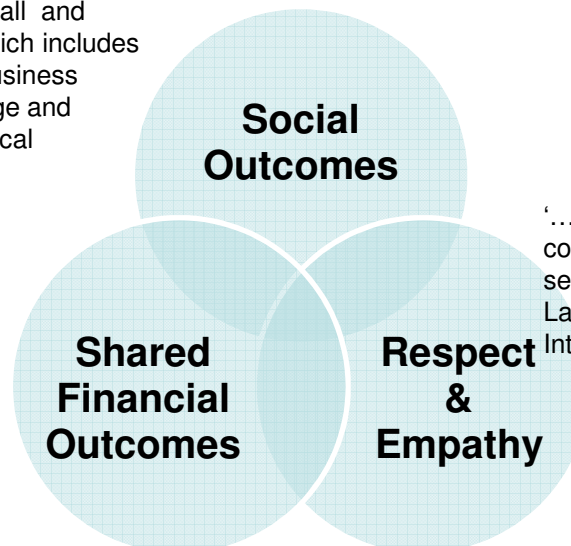
Management Philosophy



Rainforest Project Management Limited's management philosophy is focused on three core principals; Social Outcomes, Respect & Empathy and Shared Financial Outcomes.

'...committed to ensuring carbon credit funds are used for to development, install and maintain social infrastructure which includes the development of social and business structures and systems to manage and develop world class, long term local community outcomes

'...financial outcomes are shared fairly and in accordance with legal agreements thereby ensuring ethical and sustainable outcomes '



'...committed to mutual respect, open communication, empathy and strong work ethic to secure the respect and trust of the Traditional Land Owners, the Provincial Governments and the International Community '

Rainforest project Managements Limited's sources of competitive advantage

Social Outcomes

- ✓ Established strong relationships with political factions of PNG, NGO's and Traditional Owners to develop a reputation as developer of choice
- ✓ Prepared to invest in the development of people and systems necessary for the delivery of sustainable social outcomes

Respect and Empathy

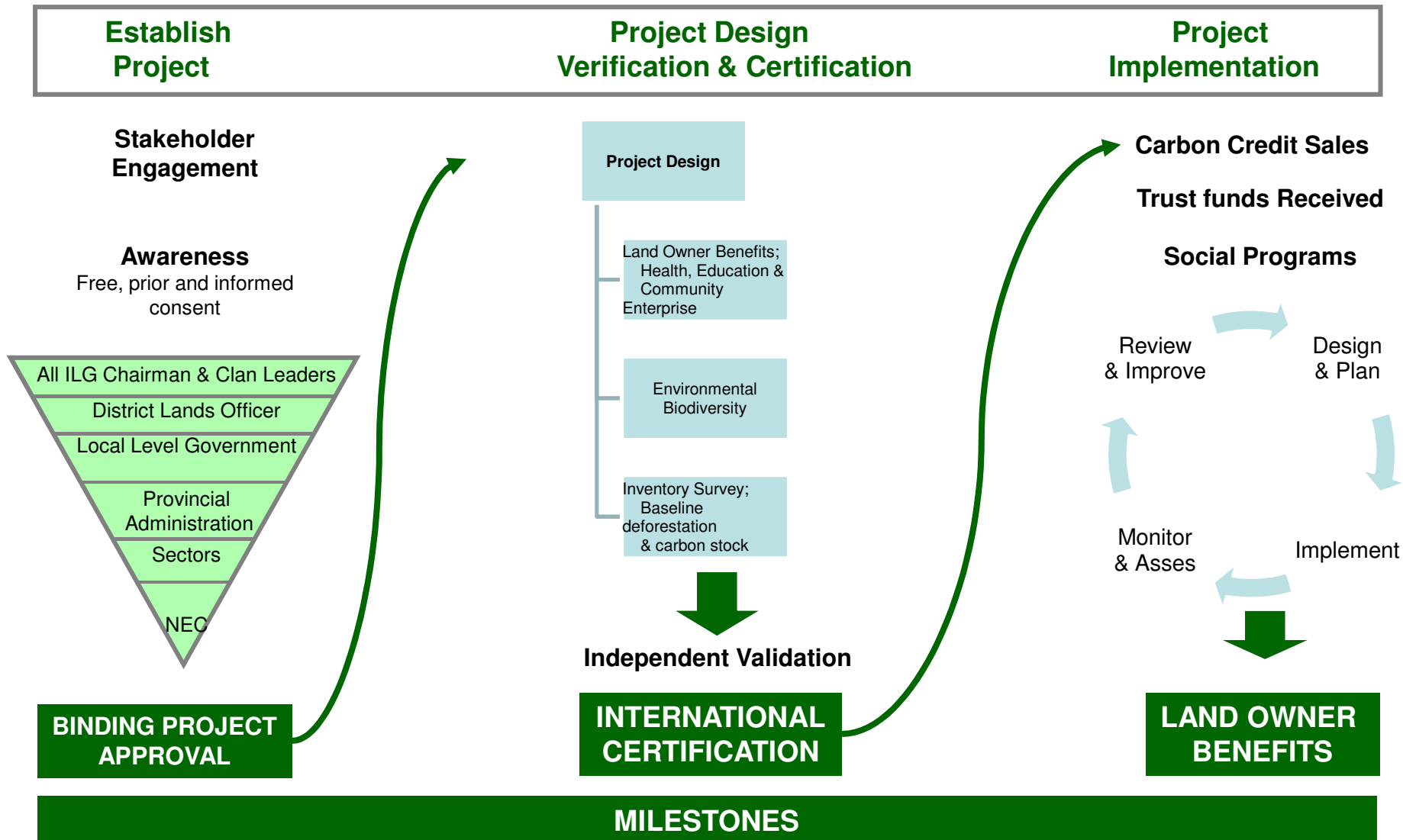
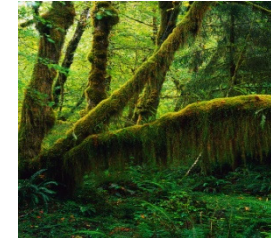
- ✓ Established strong relationships with political factions of PNG, NGO's and Traditional Owners to develop a reputation as developer of choice
- ✓ Close knit management team with Developing Country experience and success in start up companies

Shared Financial Outcomes

- ✓ Established legal agreements and financial models that clearly delineate shared financial outcomes
- ✓ Established alignment of interest between Land Owners, Political Authorities and Project Manager through the development of an endowment style financial structure

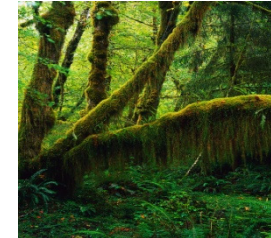
April Salumei REDD Project

Stages in Project Development



April Salumei REDD Project

Establishment safeguards

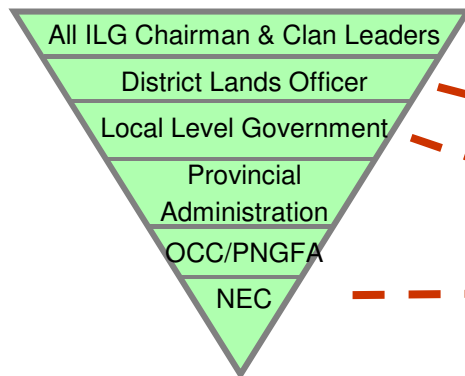


Establish Project

Stakeholder Engagement

Awareness
Free, prior and informed consent

UN Guidelines - Right of Indigenous people



IPA Confirmation

Lands Act

Elected by Land owners

Legally binding approval

BINDING PROJECT APPROVAL

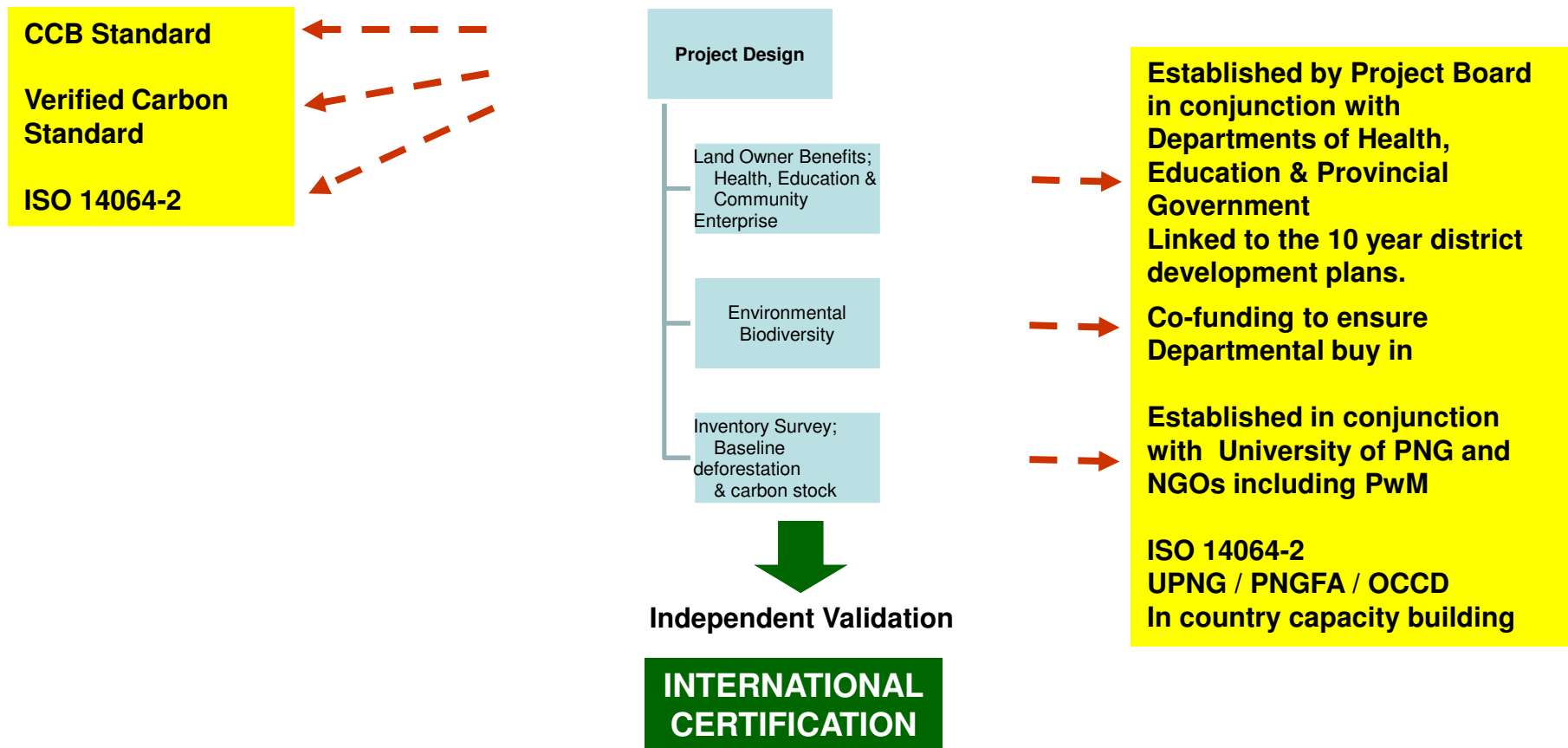
MILESTONES

April Salumei REDD Project

Establishment safeguards cont.



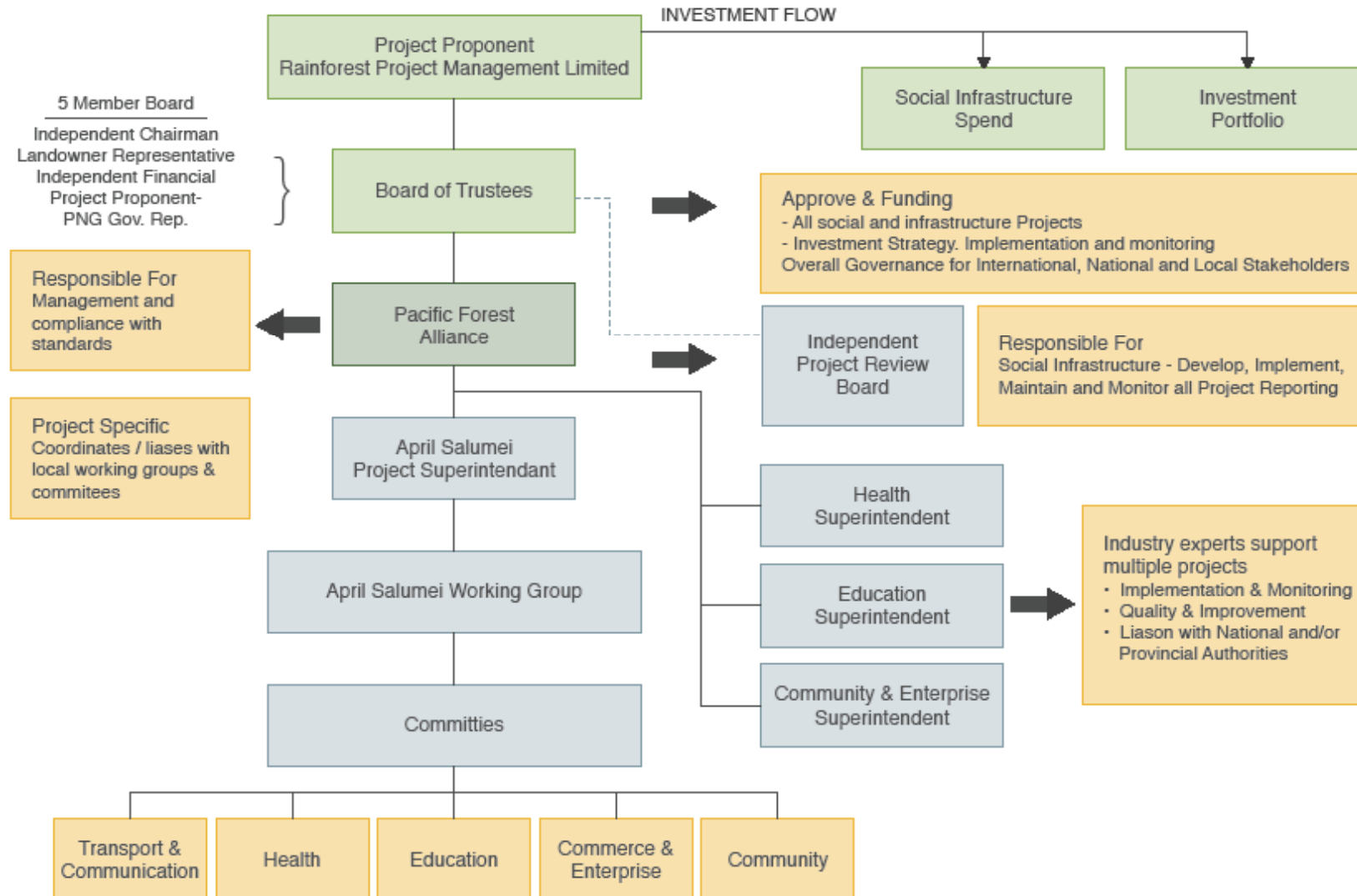
Project Design Verification & Certification



MILESTONES

April Salumei REDD Project

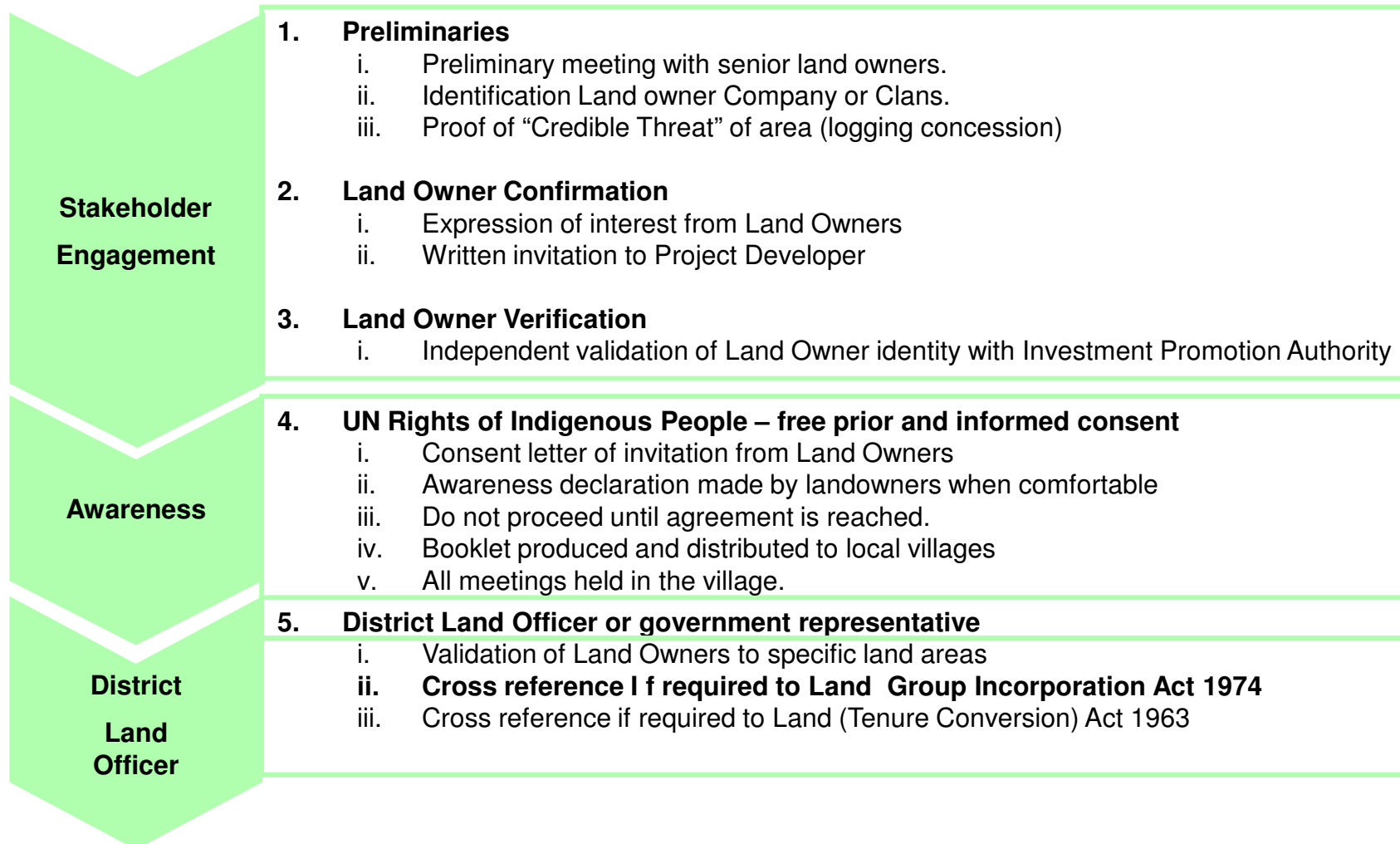
Project Structure



April Salumei REDD Project

Establish Project

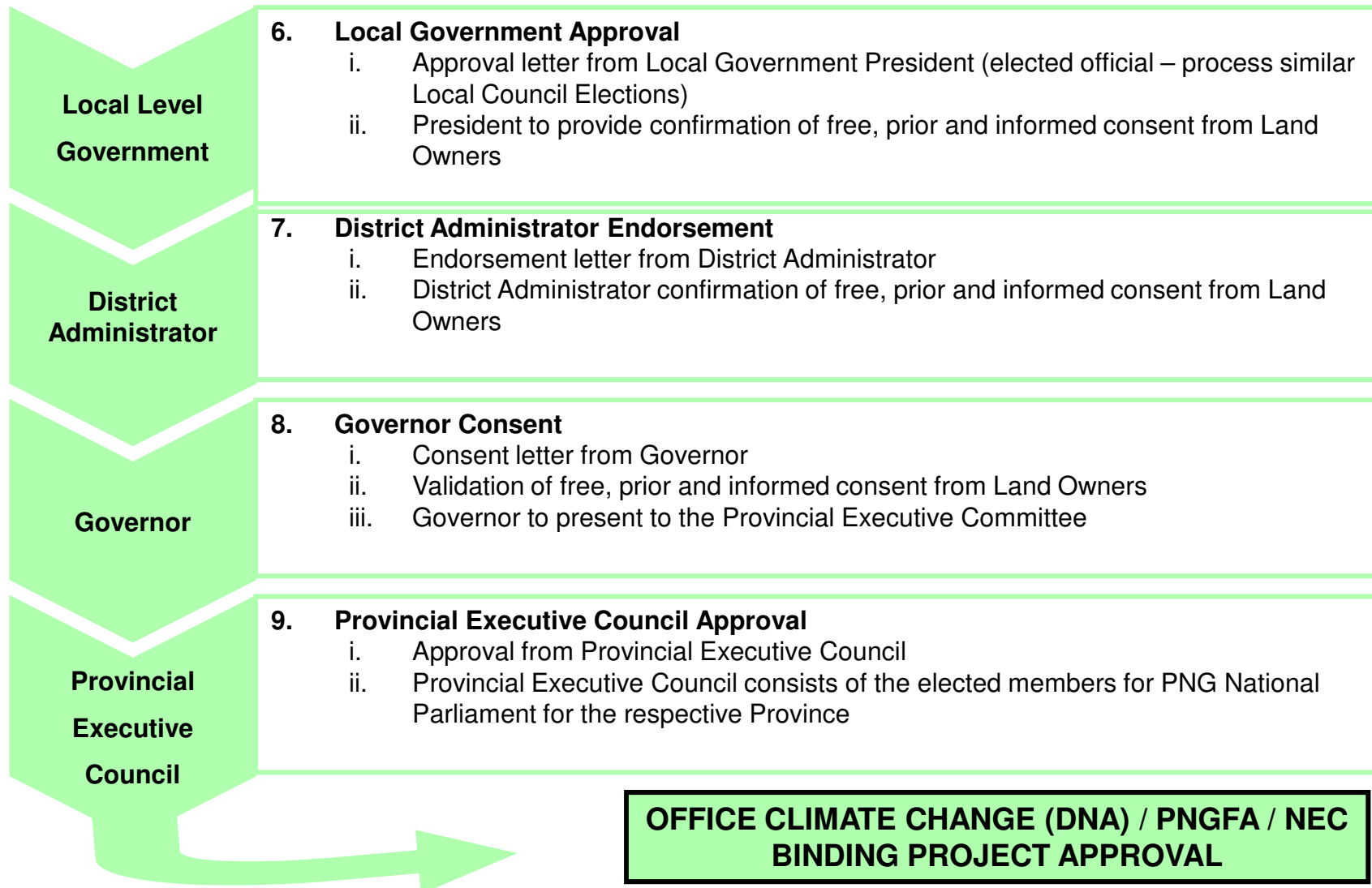
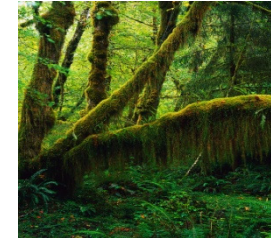
- Consent & legal Tenure (Safeguards)



April Salumei REDD Project

Establish Project

- Consent & legal Tenure (Safeguards)



April Salumei REDD Project



April Salumei REDD Project

